

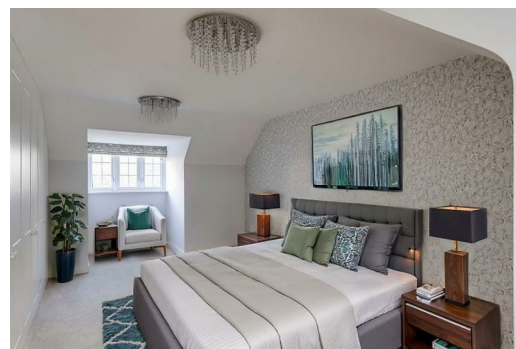


**2 Seymour Road | Buntingford | SG9 9SW**

**£1,995 Per Month**

ONLY FOR THE OVER 55's - this splendid detached chalet style bungalow is offered in good decorative order. Built by McCarthy & Stone, this very spacious home offers three bedrooms and two bathrooms and is available unfurnished with white goods. Benefits include gas fired central heating, uPVC double glazing with fitted bespoke window blinds, fitted wardrobes and lots of other built-in storage. Externally there are gardens to the front and rear, plus off street parking for two cars. Available immediately. SORRY - NO PETS ALLOWED.

Holding deposit - £460.00 : Dilapidation deposit - £2300.00 Council Tax - band 'E'



**CHRIS DELLAR**  
PROPERTIES

*Your estate agent*

58a High Street, Buntingford,  
Herts, SG9 9AH

T 01763 272605

E enquiries@chrisdellar.co.uk

[www.chrisdellar.co.uk](http://www.chrisdellar.co.uk)



## Storm Porch

## Reception Hall

Walk-in storage cupboard and separate storage cupboard. Further low level understairs storage cupboard.

## Lounge

16'1 x 11'9 (4.90m x 3.58m)

French doors to rear garden.

## Kitchen / Diner

12'8 x 12'0 (3.86m x 3.66m)

White goods including dishwasher and microwave.

## Bedroom Two

12'4 x 12'5 (3.76m x 3.78m)

## Bedroom Three

12'5 x 9'6 (3.78m x 2.90m)

## Shower Room/ WC

8'0 x 7'8 (2.44m x 2.34m)

(plus corridor)

## First Floor Landing

## Bedroom One

24'0 x 10'0 (7.32m x 3.05m)

## Bathroom

11'4 x 7'5 (3.45m x 2.26m)

## Front Garden

Lawned areas with shrub borders. Pathway to front door.

## Rear Garden

Laid to lawn with patio area.

## Parking

Two off street parking spaces.

## Deposits

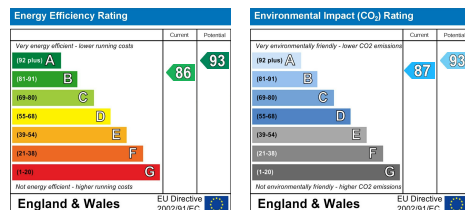
Holding deposit - £460.00

Dilapidation deposit - £2300.00

Council Tax is band 'E'

## Energy Performance Certificate

Please see EPC graph opposite.



**CHRIS DELLAR**  
PROPERTIES

*Your estate agent*

58a High Street, Buntingford,  
Herts, SG9 9AH

T 01763 272605

E enquiries@chrisdellar.co.uk

[www.chrisdellar.co.uk](http://www.chrisdellar.co.uk)